

# INTRODUCTION



Thank you for purchasing " **KOSO RX1N GP style meter** " the meter is displayed by lcm with led back light, before operating, please read the instruction carefully and follow it to install the meter.

## NOTICE

- 1.The lcd meter is apply for **DC 12V**.
- 2.For installation, please follow the steps described in manual. Any damage caused by wrong installation shall be imputed to the users.
- 3.Don't break or modify the wire terminal. To avoid the short circuit, please don't pull the wire when installing.
- 4.Do not disassemble or change any parts excluding the manual description.
- 5.The interior examination or maintenance should be executed by our professionals.

## MARK MEANING:

**NOTE** You could get the installation details from the information behind the mark.

**!** Some processes must be followed to avoid the affection caused by wrong installation.

**!** **WARNING!** Some processes must be followed to avoid damages to yourself or the public.

**!** **CAUTION!** Some processes must be followed to avoid the damage to the vehicle.



PRESS THE BUTTON ONE TIME



PRESS THE BUTTON 3 SECONDS

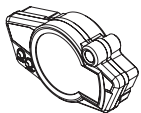
# Content

<b>1</b>	Accessory
<b>2-1</b>	Installation instructions
<b>2-2</b>	Wiring installation instructions
<b>3-1</b>	Basic function instruction
<b>3-2</b>	The button function instruction
<b>3-3</b>	The screen switch instruction
<b>3-4</b>	The main screen function switch instruction <i>Select</i>
<b>3-5</b>	The main screen function switch instruction <i>Adjust</i>
<b>3-6</b>	The setting screen instruction
<b>3-7</b>	The power test screen instruction
<b>4</b>	Function, setting instruction
<b>4-1</b>	Speed unit setting
<b>4-2</b>	Cycle / piston setting
<b>4-3</b>	The temperature unit setting
<b>4-4</b>	Speeding warning setting
<b>4-5</b>	Over RPM warning setting
<b>4-6</b>	Over temperature warning setting
<b>4-7</b>	Tire circumference and sensor point setting
<b>4-8</b>	The clock setting
<b>4-9</b>	The fuel gauge resistance and insufficient fuel warning setting
<b>4-10</b>	The target speed timer / target distance timer setting
<b>5-1</b>	 Target speed timer test
<b>5-2</b>	 Target distance timer test
<b>5-2</b>	 The top speed test
<b>5</b>	Trouble shooting
<b>6</b>	Guarantee & notice of products
<b>7</b>	Guaranty

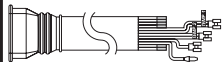
**!** We recommend that you finish the relative setting before operating to assure the operation of meter.

# 1 Accessory

**1** Meter X1



**2** Main wiring X1



**3** RPM wire set (Type A) X1



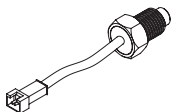
**4** RPM wire set (Type B) X1



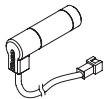
**5** Temp sensor wire set X1



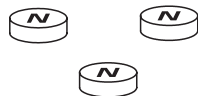
**6** PT1/8water temp sensor X2



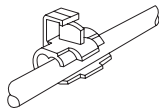
**7** Digital speed signal sensor X1



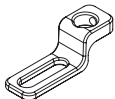
**8** D6 x 5l m/m magnet X6



**9** Connect terminal X1



**10** M8/ S type speed sensor bracket X1



**11** M10/S type speed sensor bracket X1



**12** M5 x 5L hexagonal bolt X2



**13** 2.5m/m spanner X1



**14** 3m/m spanner X1



**15** Meter bracket X1 set



**16** M4 screw X3



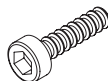
**17** M5 gasket X3



**18** M6 X 35L screw X2



**19** M8 X 30L screw X2



**20** M6 screw X2



**21** M8 screw X2



**22** M6 gasket X2



**23** M8 gasket X2

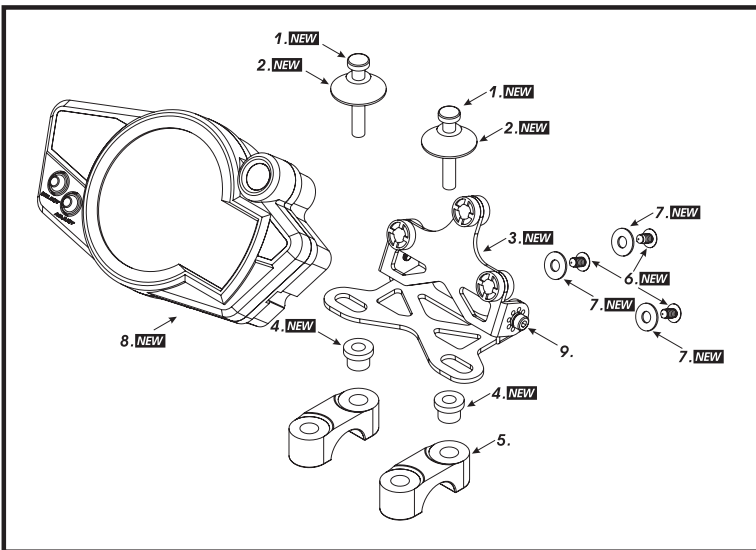


**24** Manual



**NOTE** Please contact us if the items you open are not the same, with the above-listed ones.

## 2-1 Installation instructions



When installing, please follow the process.

1. M6 or M8 screw X2

2. M6 or M8 aluminum screw bush X2

3. Bracket

4. M6 or M8 gasket X2

5. Handle bar bracket

**NOTE** You could also install it (meter bracket) on the original meter bracket.

6. M4 screw X3

7. M4 gasket X3

8. Meter

9. Meter bracket micro-adjustment screw

**NOTE** You could choose the angle first and then use the screw to fix the angle.

**NOTE** The handle bar bracket screw and screw hole will differ depending on different model. We suggest you to use the additional assembly (item 1.4) to fit it.

## MOTO/SCOOTER S type speed sensor bracket instruction



Put the magnet into the brake disc screw hole.



Install the S type sensor bracket.



Adjust the sensor bracket position to make sure that the sensor could face the magnet to prevent bad speed signal or no signal!



Install the speed sensor on the bracket.



Adjust the distance between sensor and magnet. We suggest you to make sure the distance is under 8mm for catching good speed signal.

**P.S.** Try it!

The more magnet sensor points are, the less the display interval is. When installing the magnet, please put the magnet with **N**-mark side face the outside and put them averagely to avoid wrong signal.

EX. 1: If your disk has 3 screws, you could install 1 or 3 magnets to catch the speed.

EX. 2: If your disk has 4 screws, you could install 1 - 2 or 4 magnets to catch the speed.

EX. 3: If your disk has 5 screws, you could install 1 or 5 magnets to catch the speed.

EX. 4: If your disk has 6 screws, you could install 1 - 2 - 3 or 6 magnets to catch the speed.

**After finishing the magnet installation and sensor point setting, please move your tire to test the speedometer work or not.**

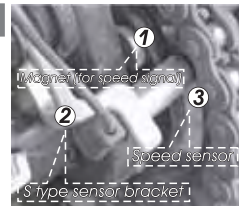
## ATV S type speed sensor bracket instruction

① INSERT THE SIGNAL MAGNET. (YOU NEED TO DIG A HOLE BY YOURSELF).

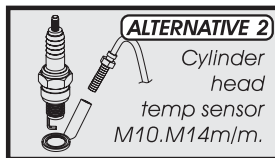
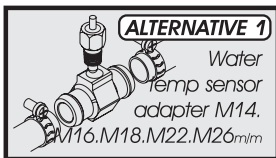
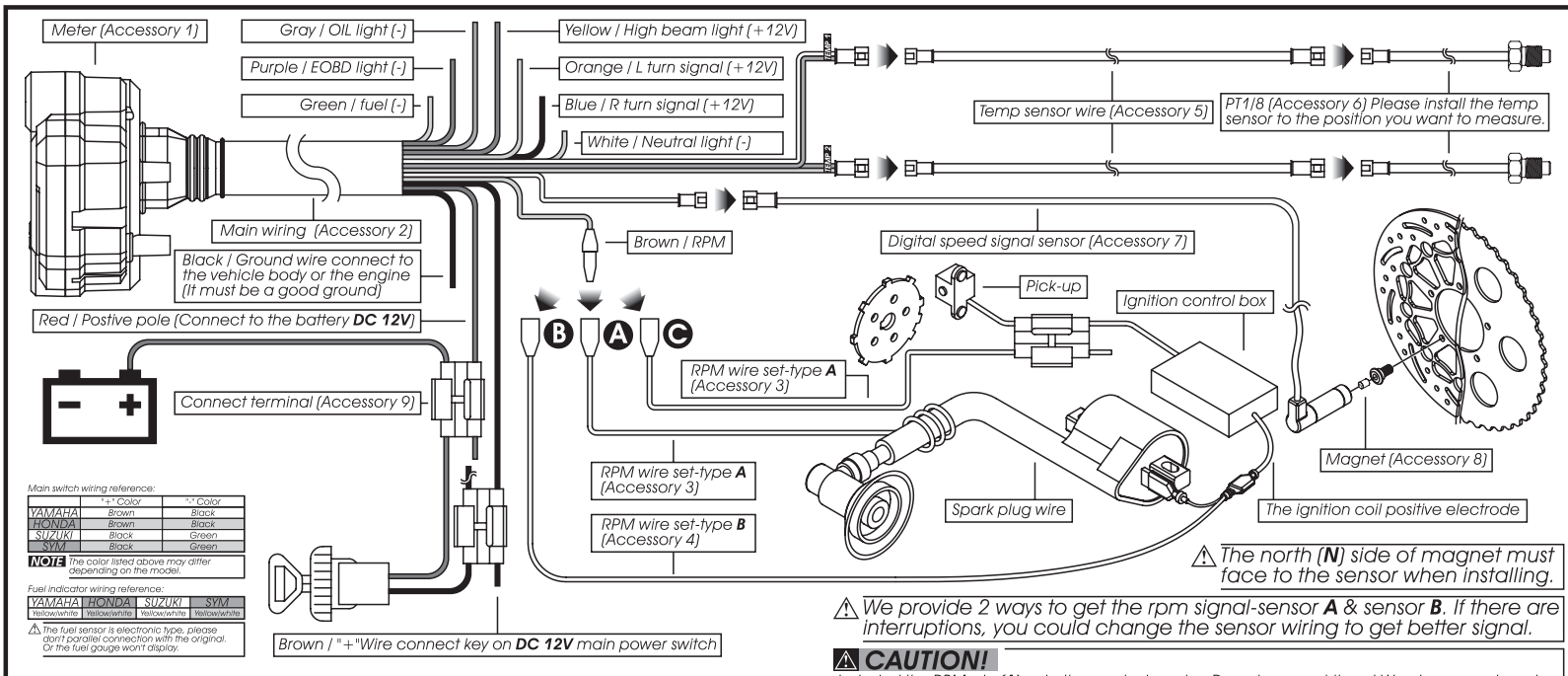
② INSTALL THE S-TYPE SENSOR BRACKET, YOU COULD ADJUST THE PROPER DISTANCE AND ANGLE TO FIT DIFFERENT MODEL.

③ AFTER INSTALLING THE SENSOR, PLEASE ADJUST THE DISTANCE BETWEEN SENSOR AND MAGNET. PLEASE KEEP THE DISTANCE IN 8mm.

**NOTE** About the setting, please refer to 4-7 Tire circumference and sensor point setting.



## 2-2 Wiring installation instructions



⚠ The north (N) side of magnet must face to the sensor when installing.

⚠ We provide 2 ways to get the rpm signal-sensor A & sensor B. If there are interruptions, you could change the sensor wiring to get better signal.

**CAUTION!**

Just wind the RPM wire(A) onto the spark plug wire. Do not connect them! We also suggest you to replace the "R" type spark plug in the mean time to get better signal.

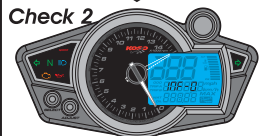
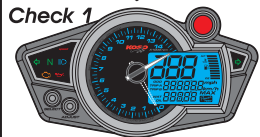
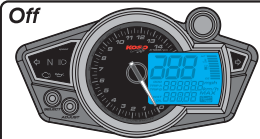
For the model more than one piston, please catch the signal from the first cylinder coil wire.

For the model with more than one piston, please just connect the rpm sensor wiring to one of the ignition coil positive electrodes.

※Please make sure that the ignition coil positive electrode before connecting the RPM sensor wire! Wrong installation will cause the meter broken!


**NOTE** We also provide different size temp sensor and adaptor M10X1.0 / M12X1.5 / M14X1.25 / M14X1.5 / M16X1.5 / M18X1.5 for choosing.

# 3-1 Basic function instruction




**Fuel symbol**

- Display range: 10 levels.



**Thermometer**

- Display range: 20~120°C (68~248°F), and display as 10 level.
- Display unit: one level is similar to 10°C (50°F).



**Speeding warning light**

- Setting range: 30~180 km/h (20~110 MPH).
- Adjusting unit: 5 km/h (5 MPH).

> Regarding the setting, please check 4-4.






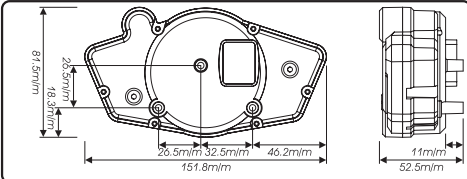
**Indicators lights**

- Repeater light (green) ↔
- Neutral light (green) N
- High beam light (blue) ▯
- EOBD light (amber) ☹
- Engine oil pressure light (red) ☹

**Temperature warning light**

- Setting range: 60~120°C (140~248°F).
- Adjusting unit: 1°C (1°F).

> Regarding the setting, please check 4-6.


**Tachometer**

- Display range: 0~15000 RPM.
- Display unit: 100 RPM.

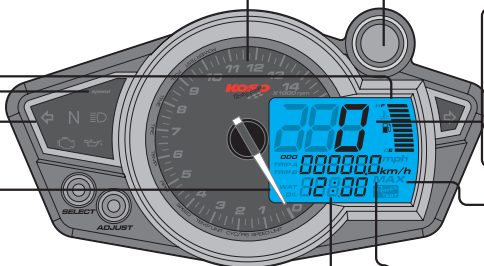
**Tachometer warning light**

- Setting range: 5000~15000 RPM.
- Adjusting unit: 100 RPM.

> Regarding the setting, please check 4-5.



● 500 RPM BEFORE THE SETTING ● OVER-RPM



**Speedometer**


- Display range: 0~360 km/h, 0~223 MPH.
- Display unit: km/h or MPH.

> Regarding the setting, please check 4-1.




**Clock**

- 24H



**Water/oil thermometer**

- Display range: 0~120°C (32~248°F)
- Display unit: 0.1°C or 0.1°F.




**MAX record**

- The meter will record the top speed, RPM and temperature automatically.


**Odo meter**

- Display range: 0~99999.9 km (mile), reset automatically after 99999.9 km.
- Display unit: 1 km (mile)



**Trip meter A.B**

- Display range: 0~999.9 km (mile), reset automatically after 999.9 km.
- Display unit: 0.1 km (mile).

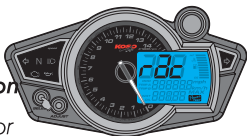
## 3-2 The button function instruction

### SELECT BUTTON

1. In main screen, press the **Select button** to choose the display of clock, water temperature or oil temperature.
2. In power test screen, press the **Select button** to choose the function you want to use.
3. In setting screen, press the **Select to choose** the function you want to set.

### SELECT BUTTON X 3 SECONDS

1. In main screen, press down the **Select button** for 3 seconds to enter the power test screen.
2. In power test screen, press down the **Select button** for 3 seconds to back to the main screen.
3. In setting screen, press down the **Select button** for 3 seconds to back to the main screen.



### ADJUST BUTTON

1. In main screen, press the **Adjust button** to choose the display of odometer, trip A, trip B or the MAX record.
2. In power test screen, press the **Adjust button** to reset the record, stop the testing, or restart the test.
3. In setting screen, press the **Adjust** to make the number setting. If you keep pressing down the **Adjust** the setting number will increase fast.

### ADJUST BUTTON X 3 SECONDS

In main screen, press down the **Adjust button** for 3 seconds to reset the trip A, trip B, or the MAX record.

### PRESS DOW THE ADJUST BUTTON

In setting screen, to add the setting value fast.

### SELECT+ADJUST X 3 SECONDS

In main screen, press down the **Select & Adjust buttons** at the same time for 3 seconds to enter the setting screen.



**CAUTION!** For safety reason - only when the vehicle is stop, then you could adjust the setting or operate the function.

## 3-3 The screen switch instruction



In the setting screen, press down the **Select button** for 3 seconds to back to the main screen.

SELECT+ADJUST X3S



In main screen, press down the **Select & Adjust button** at the same time for 3 seconds to enter the setting screen.

SELECT X3S



In main screen, press down the **Select buttons** for 3 seconds to enter the power test screen.

In power test screen, press down the **Select buttons** for 3 seconds to back to the main screen.



In any screen, you could press down the **Select buttons** for 3 seconds to back to the main screen.

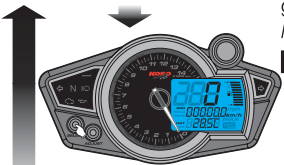
### 3-4 The main screen function switch instruction *Select*



In main screen, press the **Select button** to choose the function combination you want to display on the screen.

The alternative combination is as the circle we list:  
clock+fuel gauge > water temperature+fuel gauge > oil temperature+water temperature level gauge > clock+fuel gauge

**NOTE** If you don't install the fuel wiring, the fuel gauge will not display.

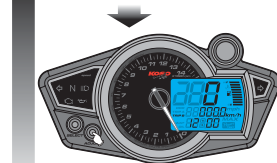
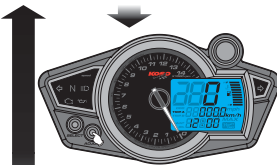


### 3-5 The main screen function switch instruction *Adjust*



In main screen, press the **Adjust button** to choose the function combination you want to display on the screen.

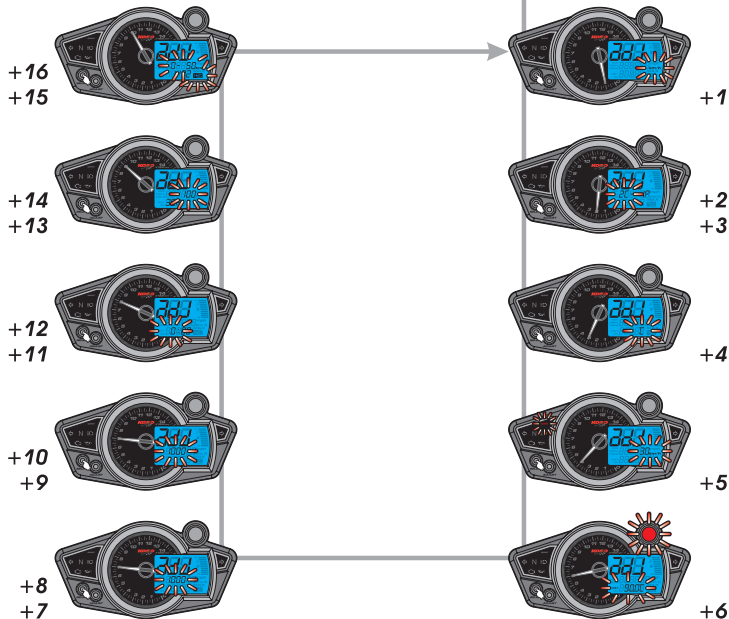
The alternative combination is as the circle we list:  
odometer > trip A > trip B > MAX record.



### 3-6 The setting screen instruction



In setting screen, press the **Select button** to choose the function you want to set. The function in setting screen is in order as **speed unit, cycle and piston, temperature unit, speeding warning, over RPM warning, over temperature, tire circumference and sensor point, time, fuel gauge and insufficient warning, target speed timer test setting · target distance timer setting** and you could finish the setting as the order. After finishing the setting, press down the **Select button** to leave the setting screen.



**NOTE** If you enter the setting screen for 30 seconds and don't press the button, it will back to the main screen automatically.

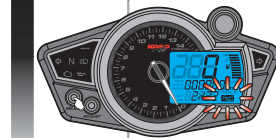
### 3-7 The power test screen instruction



In power test screen, press the **Select button** to choose the test you want to do. The test function is in order as target speed timer, target distance timer, top speed timer.



In power test screen, press the **Select button** to switch from the target speed timer to target distance timer.  
EX. Now it is in the target speed timer screen, and the setting is 0~110 km/h.



In power test screen, press the **Select button** to switch from the target distance timer to the top speed timer screen.  
EX. Now the screen switch from the target speed timer screen to the target distance timer screen, and the setting is 0~100 m. (2/32 mile)



In power test screen, press the **Select button** to switch from the top speed timer to the target speed timer.  
EX. Now the screen switch from the target distance timer screen to the top speed timer screen, and the setting is 0~100 m. (2/32 mile)



## 4 Function, setting instruction

●Speed unit	km/h / MPH alternative
●Speedometer range	0~360km/h (0~223 MPH)
○Display internal	<0.5 second
○Odometer	0~99999.9k m (mile)
○Trip A/ trip B	0~999.9 k m (mile)
○Speeding warning setting range	30~180 km/h (20~110 MPH) · Adjust unit: 5 km/h (5 MPH)
○Top speed record	0~360 km/h (0~223 MPH)
○Tire circumference setting	1000~2500 m/m · Adjust unit: 1 m/m Sensor point: 1~6
●Tachometer range	0~15000 RPM · Display unit: 100 RPM
○Display internal	<0.5 second
○Over RPM shift light setting	5000~15000 RPM · Adjust unit: 100 RPM
○MAX RPM record	0~15000 RPM
○Stroke / piston setting	2 Stroke: 1, 2, 3, 4 pistons 4 Stroke: 1, 2, 3, 4, 5, 6, 8, 10, 12 pistons
●Temperature unit	°C、°F
●Digital water temperature range	0~120°C (32~248°F) · Display unit: 0.1°C (0.1°F)
●Temperature level gauge display range	20~120°C (68~248°F), display in 10 level · Display unit: 1 level=10°C (50°F) °
●Digital oil temperature range	0~120°C (32~248°F) · Display unit: 0.1°C (0.1°F)
○Display internal	<0.5 second
○Over temperature warning setting(wat & oil)	60~120°C (140~248°F) · Adjust unit: 1°C (1°F)
○Top temperature record	0~120°C (32~248°F)

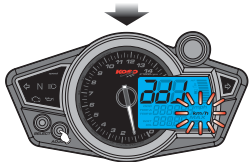
●Fuel gauge	Display in 10 levels (one level means 10% fuel)
○Fuel resistance setting	100 Ω · 510 Ω
○Insufficient fuel warning setting	10~50 % · Adjust unit: 10 %
●Clock	24 H
●Target speed timer	30~360 km/h (20~220 MPH) · Adjust unit: 5 km/h (5 MPH)
●Target distance timer	50~1000 m (1/32~20/32 mile) · Adjust unit: 50 m (1/32 mile)
●Top speed timer	The record including, 1.Speed : 0~360 km/h (0~223 MPH) 2.Distance : 0~999 m (0~3280 feet) 3.RPM : 0~15000 RPM 4.Timer : 0~59.59.99 second.
●Effective voltage	<b>DC12V</b>
●Effective temperature range	-10~+60°C
●Meter standard	JIS D 0203
●Meter size	151.8 X 81.5 X 52.5 m/m
●Meter weight	Around 212 g
●Indicator light	Neutral-green, High beam-blue, repeater-green, EOBD-amber, oil-red, speeding-red, RPM shift light yellow / red.

**NOTE** Design and specification are subject to change without notice!

## 4-1 Speed unit setting



In setting screen, press the **Select button** one time to enter the speed unit setting.



Press the **Adjust button** to choose the speed unit. EX. Now the setting is km/h.

⚠ Now the speed unit is flashing!

**NOTE** You could choose km/h or MPH in the speed unit setting screen.

⚠ The odometer & trip meter will change together with the speed unit.



Press the **Select button** to continue the function setting.

**NOTE** When you leave this screen, the setting is finished.

If you just want to make this function setting, you could press the **Select button** for 3 seconds to back to the main screen.

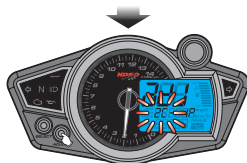
## 4-2 Cycle / piston setting



In setting screen, press the **Select button** 2 times to enter the stroke / piston setting screen.

### ⚠ CAUTION!

- Make sure the correct strokes and pistons before setting.
- Make sure the input is correct, or the RPM output will be incorrect.
- We define the engine with the ignition system ignites every 360 degree as 2-stroke and the engine with the ignition system ignites every 720 degree as 4-stroke.
- Some 4-stroke bikes with one single piston are igniting EVERY 360 degree once, so the setting should be the same as the bike with 2-stroke and one piston engine.

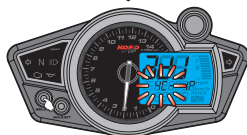


Press the **Adjust button** to select the stroke. EX. Now the stroke number is flashing.

⚠ Now the stroke setting number is flashing!

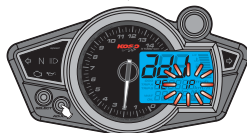
**NOTE** You could set the stroke as 2 Cycle or 4 Cycle.

If you just want to check your setting, you could press the **Select button** for 3 seconds to back to the main screen.



Press the **Select button** to enter the piston setting screen.

EX. Now the setting is changed from 2 Cycle to 4 Cycle.



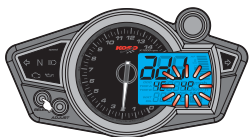
Press the **Adjust button** to select the piston number.

⚠ Now the piston number is flashing.

**NOTE** 2 Cycle: 1, 2, 3, 4 pistons  
4 Cycle: 1, 2, 3, 4, 5, 6, 8, 10, 12 pistons

NEXT PAGE

## 4-2 Cycle / piston setting



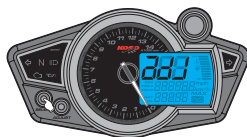
Press the **Select button** to continue the function setting.  
EX. The piston number is changed from 1p to 4p (4 pistons)

**NOTE** When you leave this screen, the setting is finished.

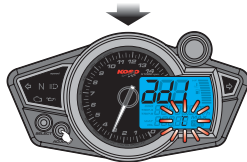


If you just want to make this function setting, you could press the **Select button** for 3 seconds to back to the main screen.

## 4-3 The temperature unit setting

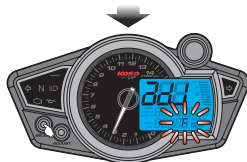


In setting screen, press the **Select button** 4 times to enter the temperature unit setting screen.



Press the **Adjust button** to choose °C or °F.  
EX. Now the temperature unit is °C.

**⚠** Now the temperature unit is flashing!



Press the **Select button** to continue the function setting.

EX. Now the temperature unit is changed from °C to °F.

**NOTE** When you leave this screen, the setting is finished.



If you just want to make this function setting, you could press the **Select button** for 3 seconds to back to the main screen.

## 4-4 Speeding warning setting

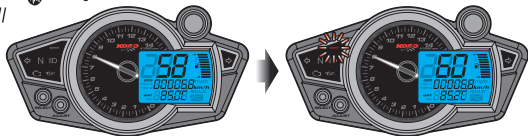


In setting screen, press the **Select button** 5 times to enter the speeding warning setting screen.

P.S.



The speeding light will light on when the speed reaches your speeding warning setting.



Press the **Adjust button** to choose the setting number. EX. Now the speeding warning light setting is 30 km/h.

⚠ Now the speeding warning light and the setting is flashing!

**NOTE** The speeding warning range: 30~180 km/h (20~110 MPH).  
Adjust unit: 5 km/h (5 MPH)

⚠ The setting unit will change together with the speed unit setting (4-1).



If you just want to check your setting, you could press the **Select button** for 3 seconds to back to the main screen.

Press the **Select button** to continue the function setting.  
EX. Now the setting is changed from 30 km/h to 60 km/h.

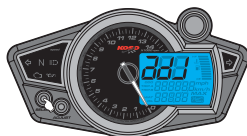
**NOTE** When you leave this screen, the setting is finished.



If you just want to make this function setting, you could press the **Select button** for 3 seconds to back to the main screen.



## 4-5 Over RPM warning setting

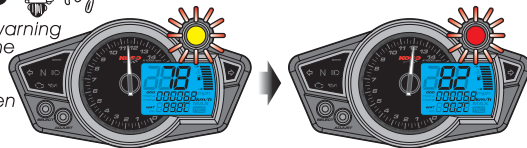


In setting screen, press the **Select button** 6 times to enter the over RPM warning setting screen.

P.S.



If you set the over RPM warning setting as 12000 RPM, the yellow light will light on at 11500 RPM and the red light will light on when it reaches 12000 RPM.

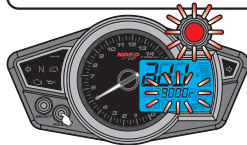


Press the **Adjust button** to choose the setting number.

EX. Now the over RPM warning setting is 9000 RPM.

⚠ Now the shift light and the setting number is flashing!

**NOTE** The over RPM warning setting range: 3000~15000 RPM. Adjust unit: 100 RPM.



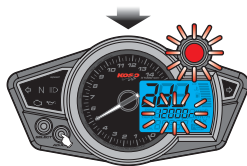
Press the **Select button** to continue the function setting.

EX. Now the over RPM warning setting is changed from 9000 RPM to 12000 RPM.

**NOTE** When you leave this screen, the setting is finished.



If you just want to make this function setting, you could press the **Select button** for 3 seconds to back to the main screen.



## 4-6 Over temperature warning setting

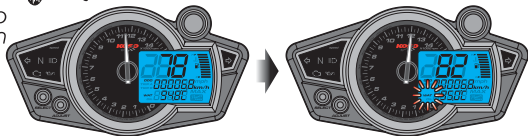


In setting screen, press the **Select button** 7 times to enter the over temperature warning setting (water temperature) screen.

P.S.



The temperature logo on LCD will flash when the temperature reached your setting.



Press the **Adjust button** to choose the setting number.  
EX. Now the over temperature (water) setting is 90.0°C.

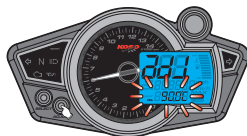
⚠ Now the water temperature logo and the setting number are flashing!

**NOTE** The over temperature warning setting range: 60~120°C (140~248°F).  
Adjust unit: 1°C (1°F).

⚠ The setting unit will change together with the temperature unit setting(4-3).

 If you just want to check your setting, you could press the **Select button** for 3 seconds to back to the main screen.

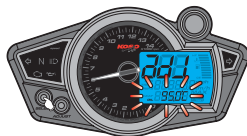
Press the **Select button** to enter the oil temperature warning setting.  
EX. Now the setting is changed from 90.0°C to 95.0°C.



Press the **Adjust button** to choose the setting number.  
EX. Now the over temperature (oil) setting is 90.0°C.


⚠ Now the oil temperature logo and the setting number are flashing!

**NOTE** The over temperature warning setting range: 60~120°C (140~248°F).  
Adjust unit: 1°C (1°F).



Press the **Select button** to continue the function setting.  
EX. Now the setting is changed from 90.0° to 95.0°.

**NOTE** When you leave this screen, the setting is finished.

 If you just want to make this function setting, you could press the **Select button** for 3 seconds to back to the main screen.

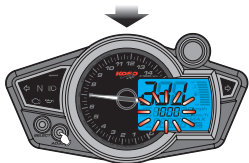
## 4-7 Tire circumference and sensor point setting



In setting screen, press the **Select button** 9 times to enter the Tire circumference and sensor point setting screen.

### ⚠ CAUTION!

- Please measure the tire circumference (the tire you will install the sensor on) and make sure the number of magnet sensor point (You could install the magnet into the disc screw or the sprocket screw.)
- The speed displayed on the meter will be affected by the setting, please make sure the setting number is correct before you make the setting.



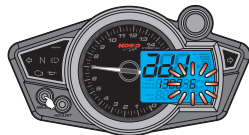
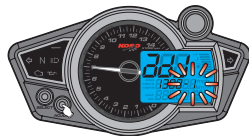
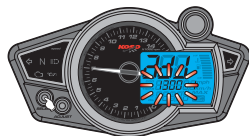
Press the **Adjust button** to choose the setting number.

EX. Now the tire circumference setting is 1000 m/m, and the sensor point is 1.

⚠ Now the circumference setting number is flashing!

**NOTE** The tire circumference setting range: 1000~2500 m/m. Adjust unit: 1m/m.

If you just want to check your setting, you could press the **Select button** for 3 seconds to back to the main screen.



Press the **Select button** to enter the sensor point setting.

EX. The circumference setting is changed from 1000 m/m to 1300 m/m.

Press the **Adjust button** to choose the setting number.

⚠ Now the sensor point setting number is flashing!

**NOTE** The sensor point setting range: 1~6 points.

Press the **Select button** to continue the function setting.

EX. the sensor point setting is changed from 1 to 6.

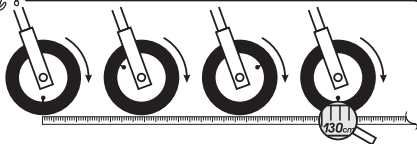
**NOTE** When you leave this screen, the setting is finished.

If you just want to make this function setting, you could press the **Select button** for 3 seconds to back to the main screen.

P.S.



Try it!



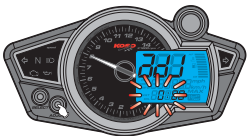
You could define the valve as the starting point and the terminal point to measure the wheel circumference with a measuring tape.

NEXT PAGE

## 4-8 The clock setting



In setting screen, press the **Select button** 11 times to enter the clock setting screen.



Press the **Adjust button** to choose the setting number.

EX. Now the time is 0:00.

⚠ Now the hour number is flashing!

**NOTE** This is a 24 H clock.



Press the **Select button** to enter the minute setting.

EX. Now the hour is changed from 0 to 13.



Press the **Adjust button** to choose the setting number.

⚠ Now the minute number is flashing!



Press the **Select button** to continue the function setting.

EX. the minute is changed from 0 to 1.

**NOTE** When you leave this screen, the setting is finished.

⚠ If you just want to make this function setting, you could press the **Select button** for 3 seconds to back to the main screen.

## 4-9 The fuel gauge resistance and insufficient fuel warning setting



In setting screen, press the **Select button** 13 times to enter the fuel gauge resistance and insufficient fuel warning setting screen.



Press the **Adjust button** to choose the setting number.

EX. Now the fuel gauge resistance setting is 100 Ω and the insufficient setting is 30 %.

⚠ Now the resistance setting number is flashing!

**NOTE** The fuel gauge resistance setting range : 100 Ω, 510 Ω.

If you don't install the fuel wiring, the fuel gauge will not display.

⚠ If you just want to check your setting, you could press the **Select button** for 3 seconds to back to the main screen.

P.S.



Usually the fuel gauge resistance is 100 Ω on YAMAHA system, and 510 Ω on HONDA system. The insufficient fuel warning setting: When the fuel is less than your setting, the fuel level gauge will flash to warn you.



Press the **Select button** to enter the insufficient fuel warning setting.

EX. Now the fuel resistance setting is changed from 100 Ω to 510 Ω.

NEXT PAGE

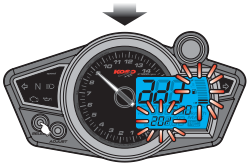
#### 4-9 The fuel gauge resistance and insufficient fuel warning setting



Press the **Adjust button** to choose the setting number.

⚠ Now the insufficient setting number is flashing!

**NOTE** The insufficient fuel warning setting range: 10~50 %. Adjust unit: 10 %.



Press the **Select button** to continue the function setting.

EX. the setting is changed from 30 % to 20 %.

**NOTE** When you leave this screen, the setting is finished.

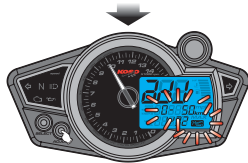


If you just want to make this function setting, you could press the **Select button** for 3 seconds to back to the main screen.

#### 4-10 The target speed timer / target distance timer setting



In setting screen, press the **Select button** 15 times to enter the target speed timer setting screen.



Press the **Adjust button** to choose the setting number.

EX. The target speed timer setting is 0~50 km/h and the target distance timer setting is 1/32 mile (50 m).

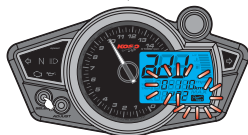
⚠ Now the  and target speed number is flashing!

**NOTE** The target speed timer setting range: 30~360 km/h (20~220 MPH).  
Adjust unit: 5 km/h (5 MPH).

⚠ The setting unit will change together with the speed unit setting (4-1).



If you just want to check your setting, you could press the **Select button** for 3 seconds to back to the main screen.



Press the **Select button** to enter the target distance timer warning setting.

EX. Now the target speed timer is changed from 0~50 km/h to 0~110 km/h.



Press the **Adjust button** to choose the setting number.

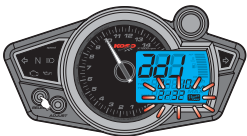
⚠ Now the  and target distance number is flashing!

**NOTE** The target distance timer setting range: 50~1000 m (1/32~20/32 mile).  
Adjust unit: 50 m (1/32 mile).

NEXT PAGE



## 4-10 The target speed timer / target distance timer setting *Power TEST*



Press the **Select button** to continue the function setting.

EX. Now the target distance timer setting is changed from 1/32 mile (50 m) to 2/32 mile (100 m).

**NOTE** When you leave this screen, the setting is finished.



If you just want to make this function setting, you could press the **Select button** for 3 seconds to back to the main screen.

## 5-1 *Power TEST* Target speed timer test



### **⚠ WARNING!**

Please use this function at racetrack to avoid traffic accidents.

In power test screen, press the **Select button** one time to enter the target speed timer test screen.

**NOTE** Please start the test when the bike stops.



If you have the power test record, it will display the record first. You must clear the record before starting a new test.

Enter the testing screen if no record.

The record display screen.



Press the **Adjust button** to clear the record and enter the target speed timer test screen.

EX. Now you could see the record you have before. It displays the target speed timer setting as 0~110 km/h, the test result: 19.20 seconds. The top speed is 110 km/h during the test., The MAX RPM is 10000 RPM during the test.



If you just want to check the record, you could press the **Select button** for 3 seconds to back to the main screen.

Enter the testing screen.



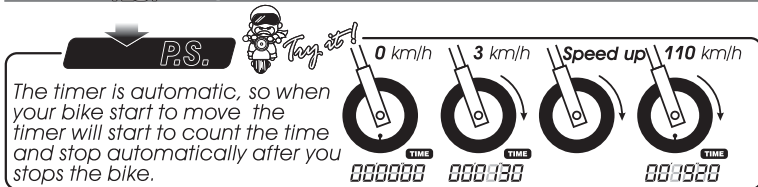
NEXT PAGE

When the bike moves, the timer will start automatically.

**⚠** Now the **0** is flashing!

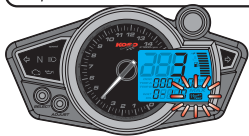
**NOTE** About the power test setting, please check **4-10**.

## 5-1 Power TEST Target speed timer test



The timer is automatic, so when your bike start to move the timer will start to count the time and stop automatically after you stops the bike.

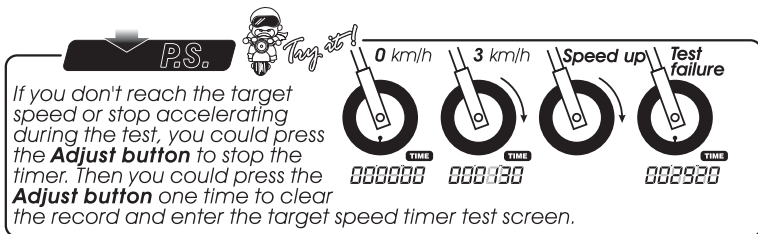
⚠ During the test, the **P.S.** will keep flashing!



When you reach the target speed you set (0~110 km/h), the timer will stop counting (19.20 second).

👉 If you just want to use the function one time, press down the **Select button** for 3 seconds to save the records and back to the main screen.

If you want to test it again, press the **Adjust button** to clear the record and enter the target speed timer test screen again.



If you don't reach the target speed or stop accelerating during the test, you could press the **Adjust button** to stop the timer. Then you could press the **Adjust button** one time to clear the record and enter the target speed timer test screen.

## 5-2 Power TEST Target distance timer test



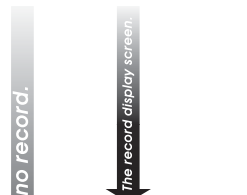
### ⚠ WARNING!

Please use this function at racetrack to avoid traffic accidents.

In power test screen, press the **Select button** 2 times to enter the target distance timer test screen.

**NOTE** Please start the test when the bike stops.

⚠ If you have the power test record, it will display the record first. You must clear the record before starting a new test.

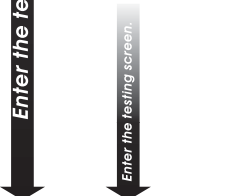


Enter the testing screen if no record.



Press the **Adjust button** to clear the record and enter the target distance timer test screen. EX. Now you could see the record you have before. It displays the target speed timer setting as 2/32 mile (100 m), the test result: 10.27 seconds. The top speed is 63 km/h during the test., The MAX RPM is 8000 RPM during the test.

👉 If you just want to check the record, you could press the **Select button** for 3 seconds to back to the main screen.



Enter the testing screen.



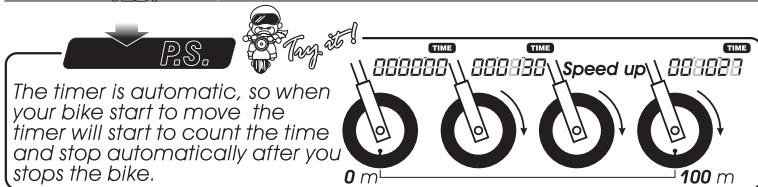
When the bike moves, the timer will start automatically.

⚠ Now the **P.S.** is flashing!

**NOTE** About the power test setting, please check 4-10.

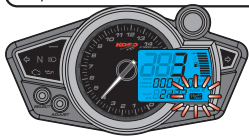
NEXT PAGE

## 5-2 Power TEST Target distance timer test



The timer is automatic, so when your bike start to move the timer will start to count the time and stop automatically after you stops the bike.

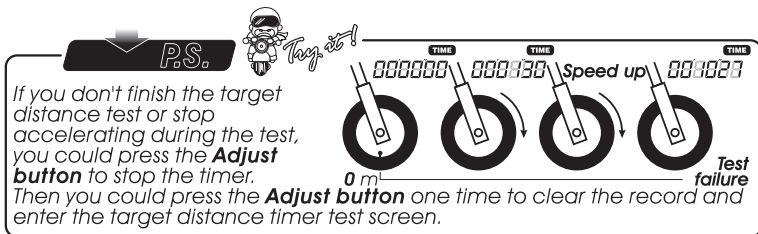
⚠ During the test, the **P.S.** will keep flashing!



When you reach the target distance you set (100 m . 2/32 mile), the timer will stop counting (10.27 second).

👉 If you just want to use the function one time, press down the **Select button** for 3 seconds to save the records and back to the main screen.

If you want to test it again, press the **Adjust button** to clear the record and enter the target speed timer test screen again.



If you don't finish the target distance test or stop accelerating during the test, you could press the **Adjust button** to stop the timer.

Then you could press the **Adjust button** one time to clear the record and enter the target distance timer test screen.

## 5-3 Power TEST The top speed test



### ⚠ WARNING!

Please use this function at racetrack to avoid traffic accidents.

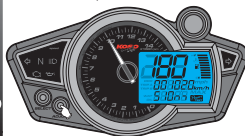
In power test screen, press the **Select button** 3 times to enter the top speed test screen.

**NOTE** Please start the test when the bike stops.

⚠ If you have the power test record, it will display the record first. You must clear the record before starting a new test.

Enter the testing screen if no record.

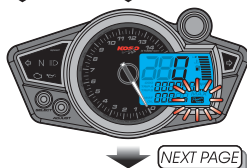
The record display screen.



Press the **Adjust button** to clear the record and enter the top speed test screen.  
EX. Now you could see the record you have before. It displays the top speed is 180 km/h, the distance to reach the top speed is 510 m, the MAX RPM is 10000 RPM during the test, the time you need to reach the top speed is 10.20 seconds.

👉 If you just want to check the record, you could press the **Select button** for 3 seconds to back to the main screen.

Enter the testing screen.



NEXT PAGE

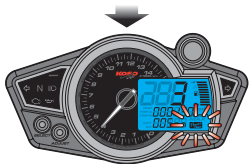
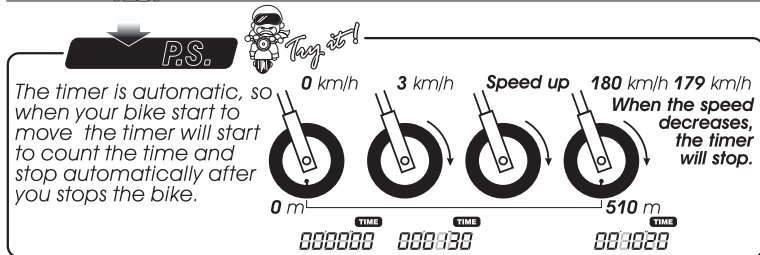
When the bike moves, the timer will start automatically.

⚠ Now the **P.S.** is flashing!

**NOTE** The top speed test range:  
Speed: 0~360 km/h. Distance: 0~999 m (3280 feet) RPM: 0~15000 RPM.  
Timer: 0~59.59.99 seconds.

⚠ The setting unit will change together with the speed unit setting (4-1).

## 5-3 Power TEST The top speed test



⚠ During the test, the **P.S.** will keep flashing!



When you reach the top speed (180 km/h), the meter will stop counting the distance (510 m), and time (10.20 seconds).

👉 If you just want to use the function one time, press down the **Select button** for 3 seconds to save the records and back to the main screen.

If you want to test it again, press the **Adjust button** to clear the record and enter the target speed timer test screen again.

## 6 Trouble shooting

The following situation do not indicate malfunction of the meter. Please check the following before taking it in for repair.

Trouble	Check item
The meter doesn't work when the power is on.	<ul style="list-style-type: none"> <li>● The power doesn't supply to the meter.                             <ul style="list-style-type: none"> <li>→ Please make sure the wiring is connected. The wiring and fuse are not broken.</li> <li>→ The battery is broken or the battery is too old to supply enough power <b>DC 12V</b> to make the meter work.</li> </ul> </li> </ul>
The meter shows wrong information.	<ul style="list-style-type: none"> <li>● Please check the voltage of your battery, and make sure the voltage is over <b>DC 12V</b>.</li> <li>● Please make sure the speed sensor is connected correctly.</li> <li>● Please check the tire-size setting.                             <ul style="list-style-type: none"> <li>→ please refer to the manual 4-7.</li> </ul> </li> <li>● Please check the RPM sensor wiring is connected correctly.</li> <li>● Please check the spark plug is "R" type or not. If not, please replace the spark plug with the "R" type spark plug.</li> <li>● Please check your setting.                             <ul style="list-style-type: none"> <li>→ Please refer to the manual 4-2.</li> </ul> </li> </ul>
Speed does not appear or appear incorrectly.	<ul style="list-style-type: none"> <li>● Please check your fuel tank.                             <ul style="list-style-type: none"> <li>→ Is there any fuel inside ?</li> </ul> </li> <li>● Please check the wiring.                             <ul style="list-style-type: none"> <li>→ Do you connect the wiring correctly ?</li> </ul> </li> <li>● Please check the setting.                             <ul style="list-style-type: none"> <li>→ Please refer to the manual 4-9.</li> </ul> </li> </ul>
Tachometer does not appear or appear incorrectly.	<ul style="list-style-type: none"> <li>● Please check the sensor.                             <ul style="list-style-type: none"> <li>→ Does the wiring break or falling off ?</li> </ul> </li> <li>● Do you connect the wiring correctly.                             <ul style="list-style-type: none"> <li>→ Please check the positive wire (red) connects to the battery, and main switch positive wiring (brown) connects to the main switch.</li> </ul> </li> </ul>
Fuel gauge does not appear or appear incorrectly.	
Temp does not appear or appear incorrectly.	
The clock is incorrect.	

※If still can't solve the problems according to the steps above, please contact with distributors or us.

## **7 Guarantee & notice of products**

*We hope our products are perfect. Should it happened that our products were bad qualities, we would do our best to exchange the same items to you. Furthermore, we apologize we could not exchange the items with breakdowns or damages by human. (the guarantee standards are on the basis of the following rules.)*

### **The guarantee rules of products**

- 1. Problems are happened when normal operating according to the notes of the manual in the guarantee time, please bring to distributors or us and we will repair for free.*
- 2. If breakdowns are happened in the guarantee time, please bring to distributors or us and present us the guarantee and the details describing the damages situations.*
- 3. It couldn't be repaired if a prize, but can contact with us.*
- 4. We will charge you for repairing under the following situations even in the guarantee time:  
〈 1 〉 No guarantee.  
〈 2 〉 No customer's name, purchase date, distributor's name, and/or change the characters in the guarantee.  
〈 3 〉 The damage is caused by being operated with mistakes, repaired roughly, disassembled and refitted.  
〈 4 〉 The damage is caused by being fell down to the ground or being watered.  
〈 5 〉 The damage is not caused by the electric power. for example: fire, earthquake, wind, rain, thunder, or visitation etc.*
- 5. The guarantee is only available in your country.*

*※The guarantee time is an advantage of consumers for repairing free. If your product needs to be repaired but the guarantee time has passed or you don't remember where you bought, please contact with us.*